



**AMAZONE**

Trailed seed drill ***Citan***



# Citan trailed seed drill

in working widths of 12 m and 15 m



Due to its easy pulling and working widths of 12 m and 15 m, the Citan trailed seed drill easily gets over the acres. With its 7,800 l hopper capacity, the Citan provides farmers with enormous efficiency, particularly for use on large farms with short sowing time frames. The Citan is equipped with a 3-chamber pressurised hopper as standard. This can also be used to place fertiliser in the seed furrow.

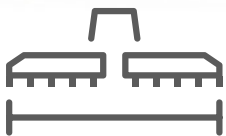


# Citan

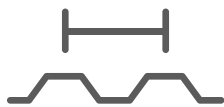
**Easy to pull, precise and highly efficient!**

	Page
The advantages at a glance	4
Settings centre   Hopper	6
Conveying systems	8
Metering drive   Operational comfort	10
RoTeC pro coulter	12
Exact harrow   Roller harrow	14
AmaLog <sup>+</sup> in-cab terminal	16
ISOBUS	18
ISOBUS   AmaTron 4	20
ISOBUS   GPS-Maps   GPS-Track	22
ISOBUS   GPS-Switch	24
Optional equipment	26
Feedback from practice   Technical data	30

# Citan trailed seed drill



12 or 15 m



12.5 or 16.6 cm



7,800 l



Up to 16 km/h



# The advantages at a glance:

- ⊕ Minimal fuel consumption due to the low pulling power requirement
- ⊕ High outputs and work rates with high working speeds of up to 16 km/h
- ⊕ Quick turn-round times owing to the generous hopper capacity
- ⊕ Clearly arranged and comfortable centralised machine settings
- ⊕ High field germination and maximum longevity with the RoTeC pro single disc couler
- ⊕ Simultaneous application of three seed types
- ⊕ Excellent crop development thanks to starter fertilisation in the seed furrow with single-shoot
- ⊕ Flexible use with existing ISOBUS terminals possible

## MORE INFORMATION

[www.amazone.net/citan](http://www.amazone.net/citan)



**PRODUCT FILM**  
Find out more



**SMARTLEARNING**  
[www.amazone.net/smartlearning](http://www.amazone.net/smartlearning)

# PURE efficiency

Sown at the optimum time with the Citan solo seed drill



## No matter whether conventional or mulch sowing – always quick in work

At working speeds of up to 16 km/h, the Citan trailed seed drill impresses with its high acreage outputs and yet perfect seed placement. With a working width of up to 15 m, the Citan can achieve work rates of up to 15 ha/h.

## Fast and effective – not only in the field

Folding in and out between the transport position with a transport width of 3 m and the working position with a working width of up to 15 m is quick and reliable. Equipped with air braking, the Citan is quick on the road with a permissible speed of up to 40 km/h.\*

\* Please be aware of national road traffic regulations!

# Comfort comes up trumps!



## Comfortable settings centre on the front left-hand side

A special feature of the Citan is the ergonomic settings centre at the front of the machine. Via the large gauges on the front of the Citan, all the important hydraulic functions and the internal tank pressure are always in view.

## The benefits

- ✔ Extremely comfortable machine setting from the front left-hand side of the machine
- ✔ Safe hopper access via a sturdy aluminium ladder and large platform
- ✔ Integrated hand wash tank and soap dispenser
- ✔ Practical hose rail for storing the hydraulic hoses

## Optimally located hopper – convenient and quick to fill

The seed hopper is placed right at the front of the drawbar which transfers additional weight to the tractor's rear axle. This improves traction. The seed hopper has a capacity of 7,800 litres and can be easily filled from big bags, a front end loader or transfer trailers.

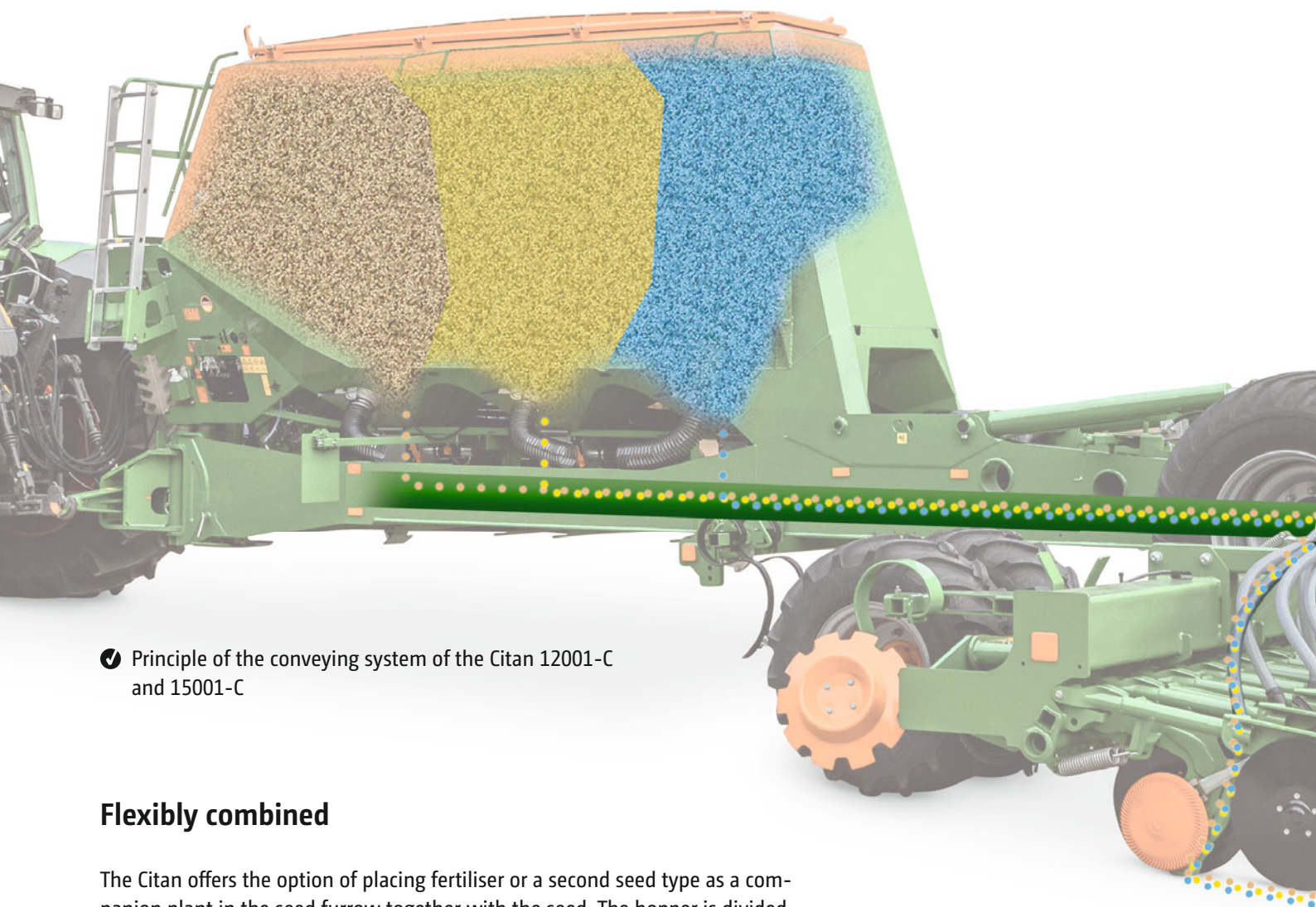
In addition, a robust aluminium ladder and a large platform provide safe access to the hopper for easy filling.



The Citan 12001-C with new settings centre

# Flexibly combined

with a 3-chamber pressurised tank for seed and fertiliser or a combination of seed types

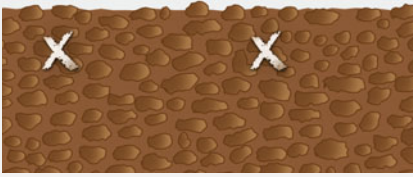


- ✔ Principle of the conveying system of the Citan 12001-C and 15001-C

## Flexibly combined

The Citan offers the option of placing fertiliser or a second seed type as a companion plant in the seed furrow together with the seed. The hopper is divided into 3 sections and can be flexibly combined. If division of the hopper is not required, it can be completely filled with just one seed type.

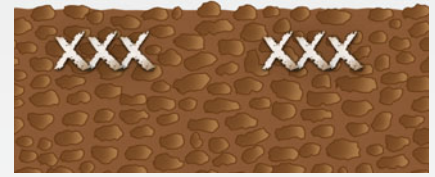
## The options:



Seed only

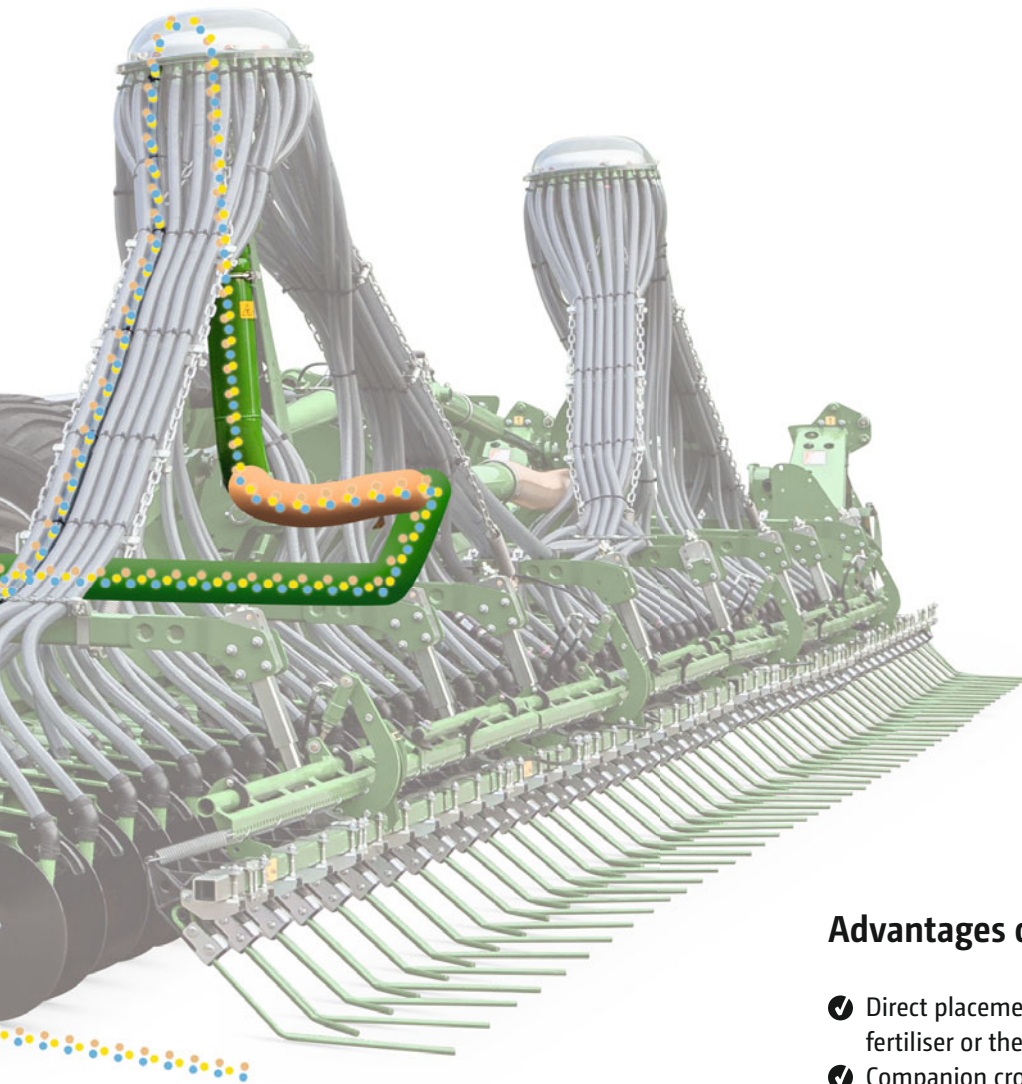


Single-Shoot: placement of 2 applied materials at a single depth



Single-Shoot: placement of 3 applied materials at a single depth

These illustrations are valid for different combinations of seeds and seed with fertiliser



### Advantages of single-shoot:

- ✔ Direct placement of fertiliser near the grain as a starter fertiliser or the ready availability of immobile nutrients
- ✔ Companion crops for plant and yield protection

# The right drive system

## Metering drive – mechanical or electric

The mechanically- or electrically-driven metering system guarantees a precise and uniform seed flow at seed rates ranging from 2 to 400 kg/ha, depending on the working speed. The metering cassettes supplied as standard cover up to 95 % of all seed types. Additional cassettes are available, for instance, for maize or specialist crops.

### The benefits:

- ✓ Easy exchange of the metering cassettes
- ✓ Calibration kit included as standard
- ✓ Simple emptying of residual amounts via the separate outlet

## Mechanical metering drive – reliable and tried-and-tested

The mechanical land wheel drive is a reliable but simple and cost-effective solution for the Citan. The large diameter land wheel ensures an even, uninterrupted drive of the metering system.

## Metering cassettes for different seed types

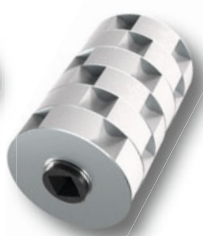
### Supplied as standard:

2 x 20 ccm



for oil seed rape, stubble turnips, lucerne

2 x 120 ccm



for catch crops

2 x 210 ccm



for barley, rye, wheat

3 x 600 ccm



for spelt, oats, wheat

2 x 660 ccm



ideal for beans, peas, fertiliser

2 x 880 ccm



ideal for high seed rates

# Maximum operational comfort

## with the electric metering drive of the Citan

### Electric metering drive – ready for precision farming!

The electrically driven metering system enables easy adjustment of the seed rate from the tractor cab, pre-metering in field corners and calibration at the touch of a button.

For the Citan with ISOBUS, metering can even be carried automatically on a part-area, site-specific basis via application maps. The calibration can be easily carried out on the machine via the TwinTerminal.

#### The benefits:

- ✔ Easy adjustment of the seed rate from the tractor cab. Also, as an alternative, automatic seed rate control on a part-area, site-specific basis via application maps
- ✔ Easy calibration possible directly down on the machine via the TwinTerminal screen



- ✔ Precise electric metering drive  
Easy setting via the operator terminal and comfortable calibration

### High operational comfort using Comfort-Pack 1 with TwinTerminal 3.0

AMAZONE offers Comfort-Pack 1, with its TwinTerminal 3.0, for the Citan with electric metering drive, in order to further simplify calibration and residue emptying. The small, additional TwinTerminal mounted directly on the machine offers a key advantage: the driver can now perform the calibration directly on the machine without having to repeatedly get in and out of the tractor.

The TwinTerminal 3.0 consists of a water- and dust-proof housing with a 3.2" display and four large keys for operation.

#### The benefits:

- ✔ Easy calibration via the TwinTerminal without having to repeatedly get on and off the tractor



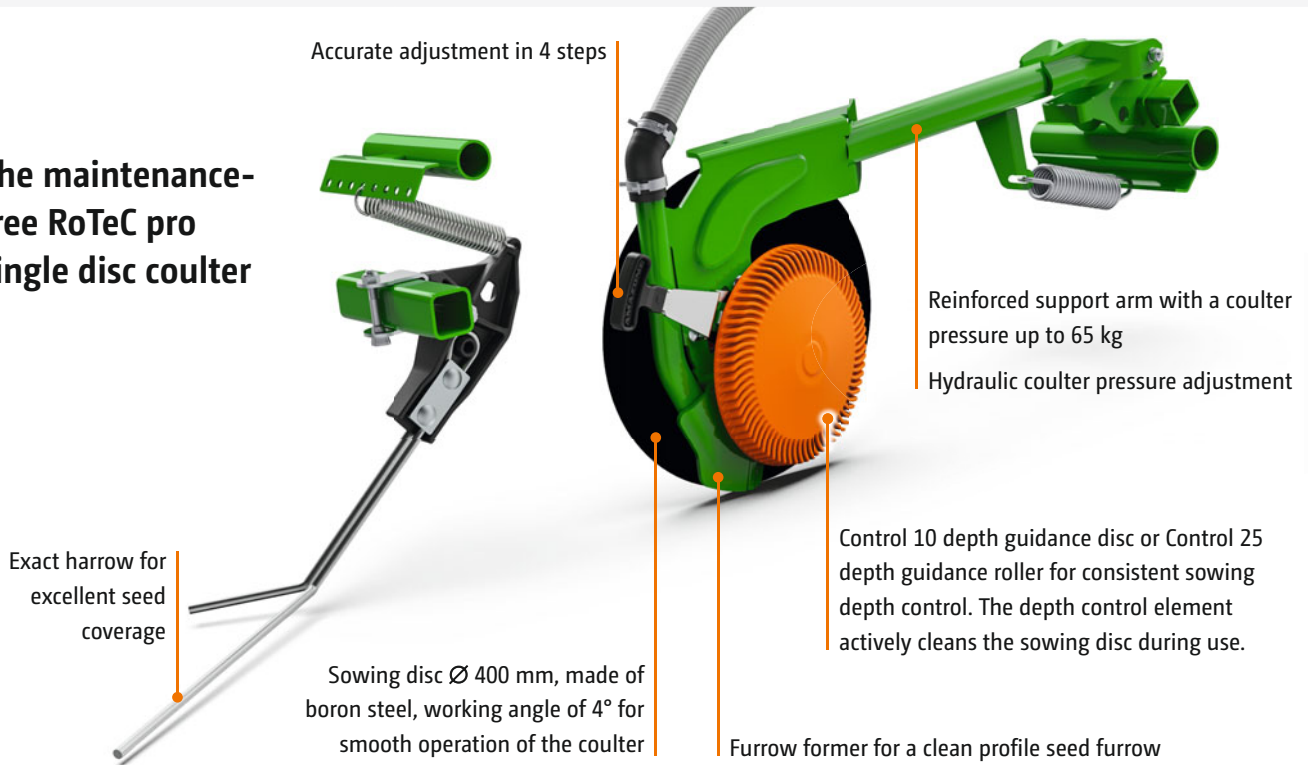
- ✔ Calibration via the TwinTerminal 3.0

# RoTeC pro coulters

The universal single disc coulters

RoTeC coulters:  
tried and tested  
2,000,000 times over!

## The maintenance-free RoTeC pro single disc coulters



## Goes right to the limit of practical operation and placement

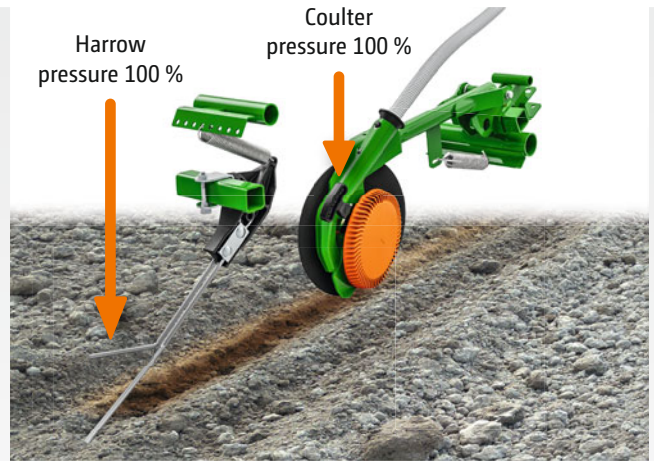
RoTeC pro coulters are maintenance-free and work very reliably, even with large amounts of straw and plant residues. The combination of the sowing disc and furrow former creates the ideal seed furrow profile to ensure the optimum seed placement into the soil. The Control 10 depth guidance disc or the Control 25 depth guidance roller prevent the soil from sticking to the sowing disc, thereby ensuring that the pre-selected sowing depth is precisely maintained.

## Advantages of the RoTeC pro coulters

- ✔ High-performance single disc coulters for wet and sticky soil types
- ✔ High level of self-cleaning via the depth guidance disc
- ✔ Decoupling of the coulters depth control from the reconsolidation
- ✔ Coulters pressure of up to 65 kg
- ✔ Hydraulic coulters pressure adjustment
- ✔ Working speeds of up to 16 km/h



✔ RoTeC pro coulters run smoothly and with precision



✔ Splitting the coulters and harrow pressures

### Ingenious independent depth control of the coulters and the following harrow

One of the unbeatable advantages of the RoTeC pro coulters is that the reconsolidation is independent to the depth control. This means that the coulters are raised only once when passing a stone. Furthermore, the coulters and harrow pressure can be adjusted independently of each other. This very even and accurately controlled way of guiding the RoTeC coulters is provided by the Control 10 depth guidance disc with a 10 mm wide contact area or the Control 25 depth guidance roller with a 25 mm wide contact area mounted directly beside the coulters.

The basic setting of the sowing depth is in 4 steps and is done directly on the coulters without tools.

### Coulters pressure adjustment

RoTeC pro coulters can be operated with a coulters pressure of up to 65 kg. With AMAZONE, the actual effective coulters pressure is comparatively higher because the pressure is not divided between a depth guidance disc and the coulters but acts exclusively on the coulters. This means that the coulters place seed reliably, even in heavy ground.

### RoTeC pro-S coulters for hard conditions

The RoTeC pro coulters with a 25 mm wide furrow former is also available in a RoTeC pro-S version with a 14 mm wide furrow former and a higher neck.

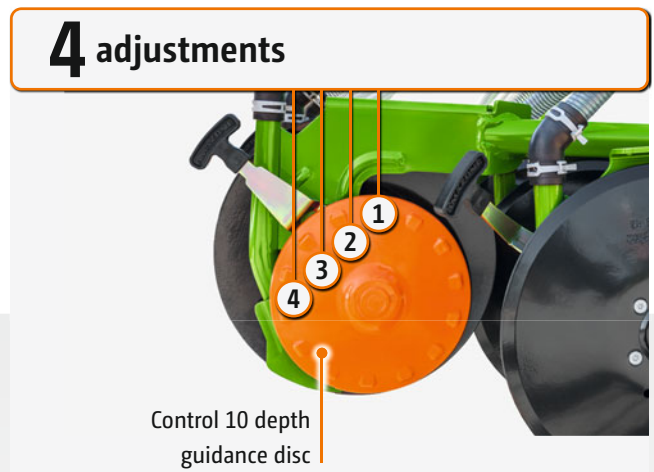
#### The benefits:

- ✔ Improved penetration characteristics and depth consistency of the coulters, even on heavy and dry ground

### Precise and simple adjustment of the RoTeC pro single disc coulters



✔ RoTeC pro coulters (Ø 400 mm) with Control 25 depth guidance roller  
The cleats, which are open at the rear, provide a very good self-cleaning effect.



✔ RoTeC pro coulters (Ø 400 mm) with Control 10 depth guidance disc

# Exact harrow S or the Roller harrow HD

Flexibility under all operational conditions





### Exact harrow S – seed coverage

Together with the RoTeC pro coulter, the Exact harrow S carries out the levelling and seed coverage in both normal and even wet conditions.

**The benefits:**

- ✔ Reliable seed coverage even in heavy and wet soil conditions
- ✔ Optional hydraulic harrow pressure adjustment



✔ RoTeC pro coulters and Exact harrow S

### Roller harrow HD – additional seed embedment

The Roller harrow HD with hardened harrow tines can be used when the Citan is operated on dry soils.

**The benefits:**

- ✔ Decoupling of the coulter and roller pressure
- ✔ Press roller with up to 35 kg of extra pressure
- ✔ For good seed/soil contact
- ✔ Quick changeover to the Exact S following harrow in wet conditions

### With optimised contour following

Thanks to the robust spring suspension, the Roller harrow maintains its roller pressure even on undulating ground. The mechanical contour following due to the sprung mounting system means that the soil is optimally reconsolidated, since the harrow pressure remains constant. Furthermore, the Roller harrow can be matched to the soil conditions.



✔ Sprung-suspended Roller harrow



✔ Sprung-suspended Roller harrow

# Simple and comfortable

AMAZONE AmaLog<sup>+</sup> in-cab terminal





## AmaLog<sup>+</sup> – simple and reliable

AmaLog<sup>+</sup> is a simple and very reliable in-cab terminal for the Citan in combination with mechanical metering drive. Operation is possible using non-ISOBUS ready tractors.

### AmaLog<sup>+</sup> functions

- ✓ Tramline control
- ✓ Pre-emergence markers
- ✓ Fill level monitoring
- ✓ Hectare meter
- ✓ Forward speed readout
- ✓ Monitoring of the fan speed



MEMBER OF



# ISOBUS as the basis for intelligent communication

## One language, many benefits!

Each ISOBUS-enabled machine from AMAZONE comes with the latest technology and almost unlimited possibilities. It makes no difference whether you use an operator terminal from AMAZONE or an ISOBUS terminal fitted directly in the tractor. ISOBUS is an internationally recognised standard for communication between the operator terminal, tractors and connected implements on the one hand and Farm Management Information Systems on the other.

## Operation with a wide variety of ISOBUS terminals

Which means that ISOBUS enables you to take control of all your ISOBUS compatible equipment. You only have to connect the machine to the respective ISOBUS terminal and the usual operator interface appears on the monitor in your tractor cab.

### Benefits of ISOBUS at a glance:

- ✔ This worldwide standard provides a uniform interface and data exchange format that ensures compatibility even with third party manufacturers
- ✔ Plug and Play between machine, tractor and additional ISOBUS implements



**M<sup>ORE</sup>**  
than ISOBUS

# Perfectly developed machine operation from AMAZONE

**AMAZONE machinery and operator terminals offer a range of functions which are very easy and safe to operate:**

- ✔ Highest compatibility and function flexibility of your ISOBUS equipment
- ✔ No additional modules on the machine side. All ISOBUS machines from AMAZONE come ready-equipped with the necessary ISOBUS functions as standard
- ✔ Practice-oriented machine software and logical menu structure
- ✔ MiniView display with all AMAZONE terminals and additional ISOBUS terminals. See, for instance, the machine data in the map view
- ✔ Possibility of operating the machine via the tractor terminal or a twin terminal solution
- ✔ Flexible assignment of the map and machine view between the tractor terminal and the operator terminal
- ✔ Unique operating concept. Freely configurable displays and individual user interfaces for each driver
- ✔ Useful additional functions such as automatic boom lowering on AMAZONE crop protection sprayers
- ✔ Integrated TaskController data logger function



Clearly-structured AMAZONE machine operation

#### **Advantages of the AMAZONE machine software:**

- ✔ User-oriented and intuitive
- ✔ Tailored to the machine
- ✔ Function scope above and beyond the ISOBUS standard

# AmaTron 4 ISOBUS terminal

Full functionality



The AmaTron 4 ISOBUS operator terminal, developed in-house by AMAZONE, enables convenient tablet-style, touch-screen control of any ISOBUS-enabled agricultural machine. AmaTron 4 makes all ISOBUS functionality possible - with added convenience, user-friendliness and overviews. And yet: it performs even better in combination with AMAZONE agricultural machinery and guarantees full functionality when it comes to precision farming.



ROBUSTNESS

**STURDY!**

- ✔ Low-reflection, 8" display with waterproof and dustproof aluminium housing
- ✔ Rear-mounted hand rest for a secure grip



RELIABILITY

**WELL THOUGHT THROUGH!**

- ✔ Practical and clear menu navigation for simple and intuitive use
- ✔ Actuation via touch screen or soft keys
- ✔ Simple documentation and job management: work first - then save the data
- ✔ Optional software licences for maximising every opportunity in precision agriculture



COMFORT

**COMFORT!**

- ✔ App carousel for quick and easy navigation at the swipe of a finger
- ✔ Freely configurable status bar - the most important parameters available at a glance, all of the time
- ✔ The practical quick-start menu allows quick and easy import and export of job data

Extended functionality via licences	Functions for the Citan in AmaTron 4
GPS-Maps&Doc	<ul style="list-style-type: none"> <li>• Inactive field boundaries and automatic field detection</li> <li>• Documentation via ISOBUS Task Controller or PDF export</li> <li>• Application maps in ISO-XML format and Shape file format</li> <li>• Online data exchange via the AmaTron Share App</li> </ul>
GPS-Switch basic	<ul style="list-style-type: none"> <li>• Section Control with up to 16 part-width sections</li> <li>• Virtual headland</li> </ul>
GPS-Track	<ul style="list-style-type: none"> <li>• Optical parallel guidance aid</li> <li>• Various different track modes</li> <li>• ISOBUS Level 1 tramline control</li> </ul>
AmaCam	<ul style="list-style-type: none"> <li>• Display of a camera image on the AmaTron 4 including reverse detection</li> </ul>
AmaTron Twin	<ul style="list-style-type: none"> <li>• Display extension using the AmaTron Twin App</li> </ul>

# More comfortable machine operation



## AmaTron Twin App – extended display for user-friendly operation

The AmaTron Twin App offers the driver even more comfort during work, as GPS functions in the map view can also be displayed on a tablet in parallel with the machine operation on the AmaTron 4.

### Advantages of the AmaTron Twin display enhancement:

- ✔ Use of an existing mobile device
- ✔ Greater clarity – every application always in view
- ✔ Comfortable control of the GPS functions in the map view, in parallel, via the mobile device
- ✔ Clear, authentic representation of the working machine and its part-width sections



The AmaTron Twin App

## AmaPilot+ – everything in the one hand!

Thanks to the AUX-N feature, you can operate multiple functions on the machine via AmaPilot+ or any other ISO-BUS multi-function joystick.

### Advantages of AmaPilot+:

- ✔ Nearly every function is controlled directly via the 3 levels
- ✔ Adjustable palm rest
- ✔ Freely programmable, individual key layout



# Workday made easy –

Make the most of the possibilities!

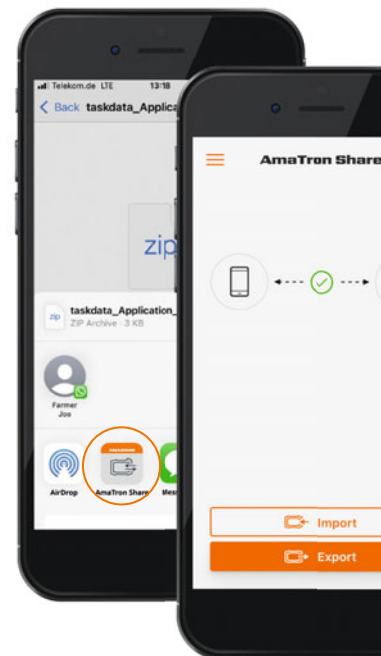
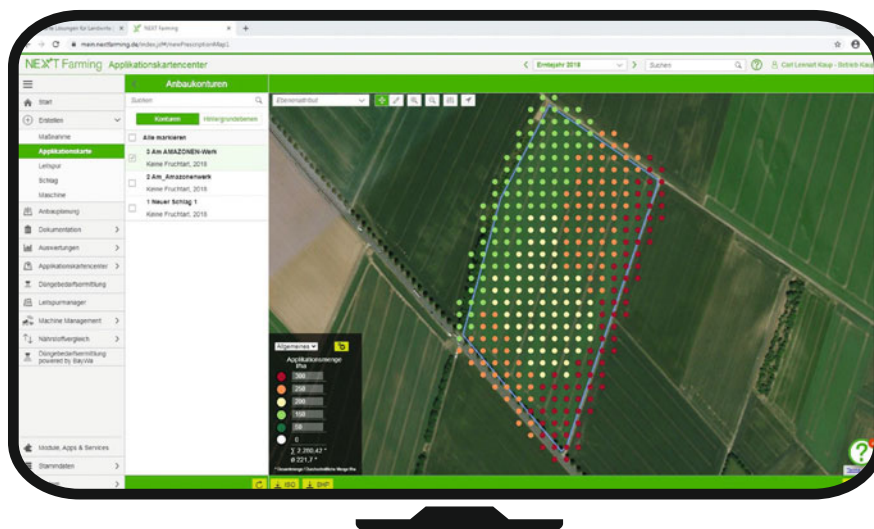
## **GPS-Maps&Doc** with data exchange via the AmaTron Share App

With the GPS-Maps&Doc licence, the AmaTron 4 can gather and document both machine data and georeferenced data via Task Controller (TC). Part-area, site-specific operation via application maps in either Shape file or ISO-XML formats is also possible.

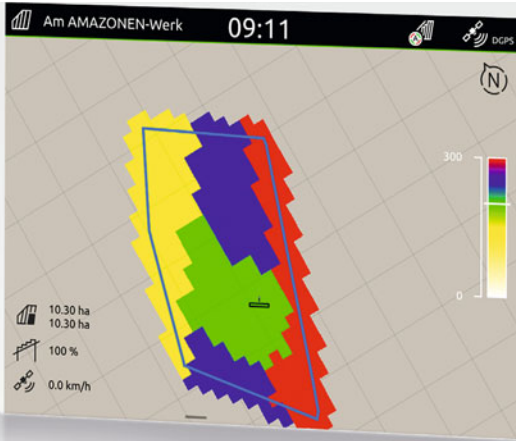
### Advantages of GPS-Maps&Doc with the AmaTron Share App:

- ✔ Intuitive system for processing application maps
- ✔ Automatic part-area, site specific regulation of the application rate
- ✔ Indication of inactive field boundaries and automatic field detection when approaching the vicinity
- ✔ Optimum crop management via needs-based application
- ✔ Comfortable import of jobs in ISO-XML or Shape file format and export of completed jobs in ISO-XML format or as a job summary in PDF format via the AmaTron Share App
- ✔ Start a new task straight away and decide later whether the data is to be saved or not

## AmaTron Share App – for comfortable data management!



Generation of an application map in a farm management information system for automatic part-area, site-specific control of the application rate via the AmaTron 4



Display of the application map in AmaTron 4



Display of the camera image in the AmaTron 4

## GPS-Track

The GPS-Track parallel guidance greatly helps with orientation in the field, especially on grassland or in areas without tramlines.

- ✔ With a virtual light bar in the status bar
- ✔ Automatic tramline control via GPS for seed drills
- ✔ Various track modes such as A-B lines or contour following
- ✔ Optional with AmaTron 4

## AmaCam

Software licence for displaying a camera image on AmaTron 4.

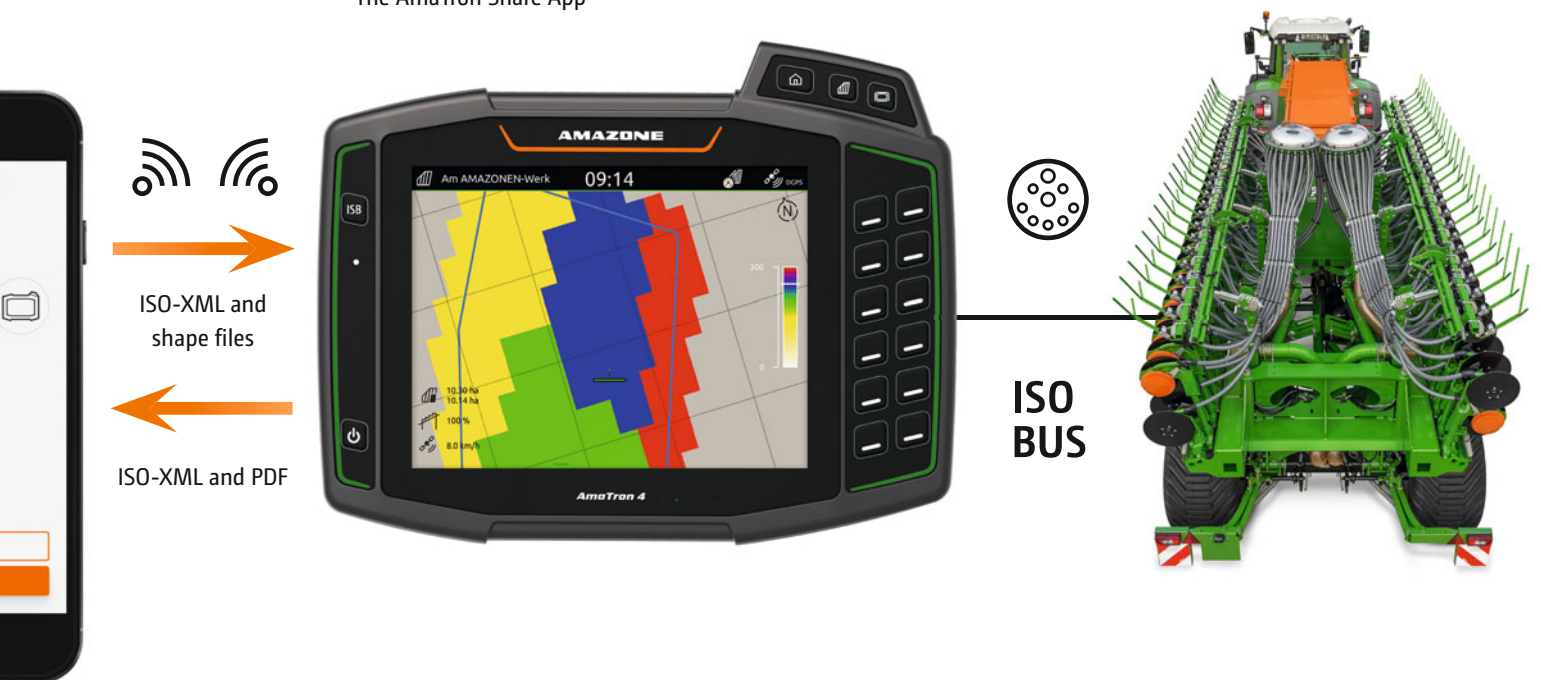
- ✔ Automatic display of the camera image on AmaTron 4 when reversing

## AmaTron Share App for digital data transfer. Try it now!

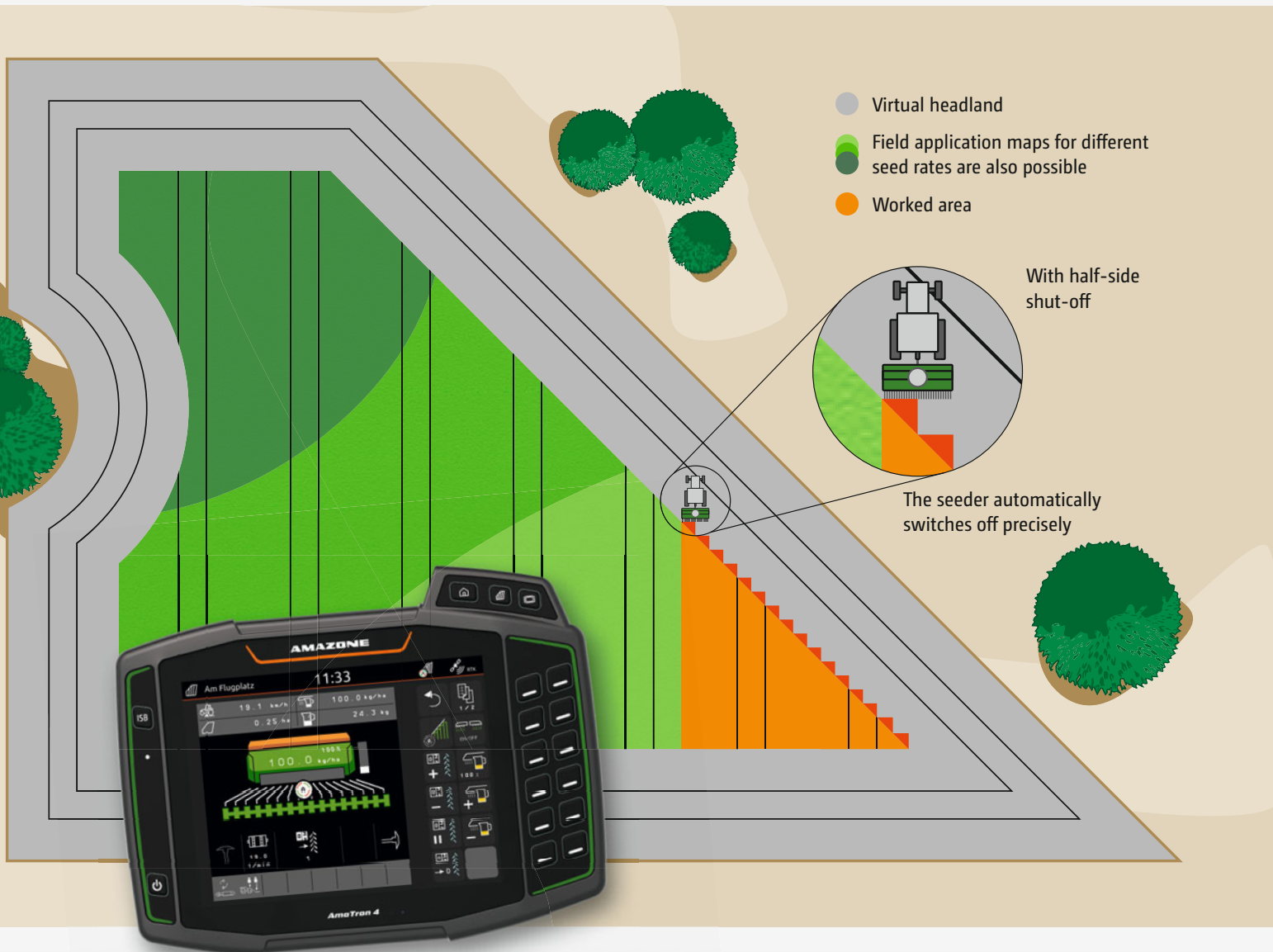
The AmaTron Share App, which is connected to the AmaTron 4 via Wi-Fi, allows all data to be conveniently transferred online. For example, the App enables application maps to be easily sent from the office to the AmaTron 4 for completion. Job data can also be sent to customers or back to the office as PDF documentation via the cloud, email or messenger services such as WhatsApp after the job has been completed. This is user-friendly data management!



The AmaTron Share App



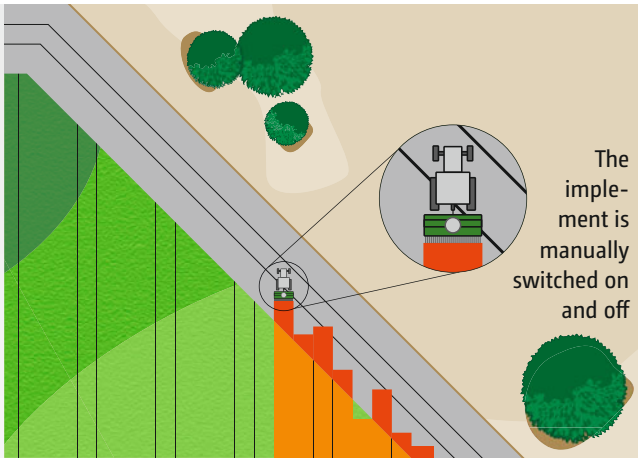
# GPS-Switch automatic part-width section control



## Accurate placement of the seed!

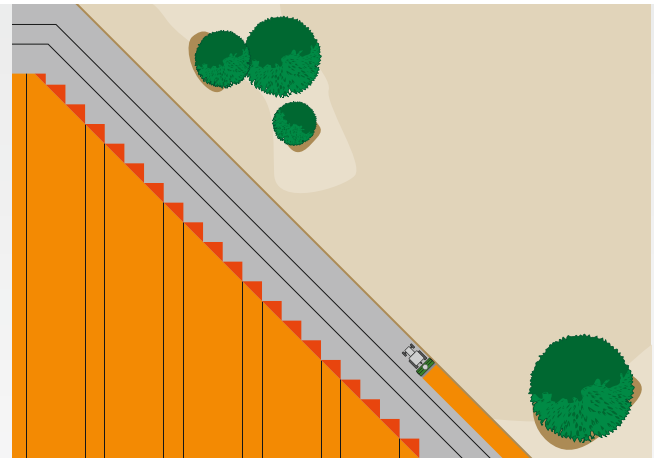
Precise sowing is very important, in order to avoid over- and under-sowing in critical areas. A remedy for accurate placement is offered by the half-side control, which reduces the overall working width to half so that a significant sav-

ing is achieved, especially in wedge shaped fields and on the headland. The two halves of the drill each correspond to one controllable part-width section.



The implement is manually switched on and off

Over- or under-sowing with manual on/off control without GPS-Switch



Position dependent, automatic control, both on and off, of the electric metering unit via GPS-Switch

If the operating terminal facilitates Section Control, such as GPS-Switch part-width section control from AMAZONE, the part-width sections are activated completely automatically and in relation to the GPS position. Once a field has been created, and then in automatic mode, the driver can concentrate fully on the operation of the towing vehicle, since the part-width sections are switched automatically in wedge shaped fields and on headlands.

**Benefits of automatic part-width section control:**

- ✔ Stress relief for the driver
  - ✔ Increase in precision, especially at night or at higher speeds
  - ✔ Fewer overlaps and gaps
  - ✔ Saving inputs
  - ✔ Less crop damage and environmental impact
- ❗ “With Section Control, the ISOBUS terminal takes a lot of pressure away from the driver.”  
 (“dlz agrar magazine” – test report ZA-TS fertiliser spreader · 02/2017)

**GPS-Switch**

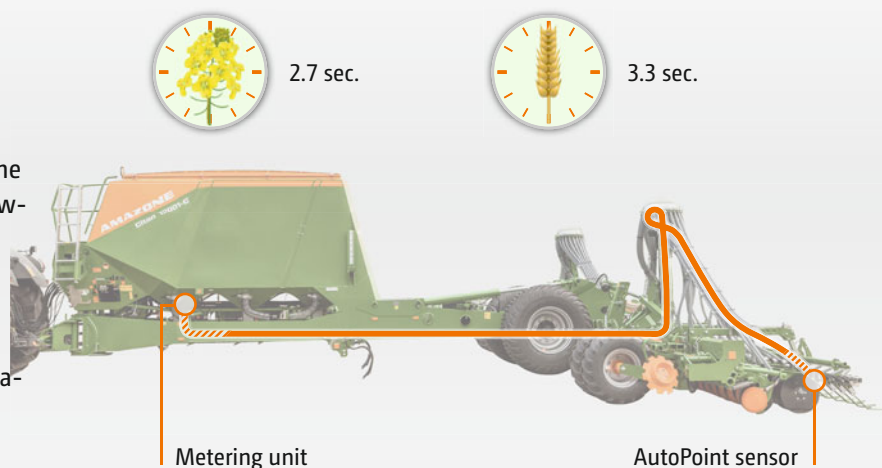
With GPS-Switch, AMAZONE offers GPS-based, fully automatic, part-width section control for all AMAZONE operator terminals and ISOBUS-compatible fertiliser spreaders, crop protection sprayers or seed drills.

**GPS-Switch basic**

- ✔ Automatic part-width section control with up to 16 part-width sections
- ✔ Creation of a virtual headland

**Switch time optimisation – GPS-Switch with AutoPoint**

- ✔ Automatic determination of the conveying time of seed flow from the metering unit to the sowing couler
- ✔ Minimisation of misses and overlaps for good field hygiene
- ✔ Reduction in the disease pressure results in fewer plant protection measures and a simultaneous reduction in cost



Metering unit

AutoPoint sensor

# Equipment levels that delight!

For more efficiency and comfort



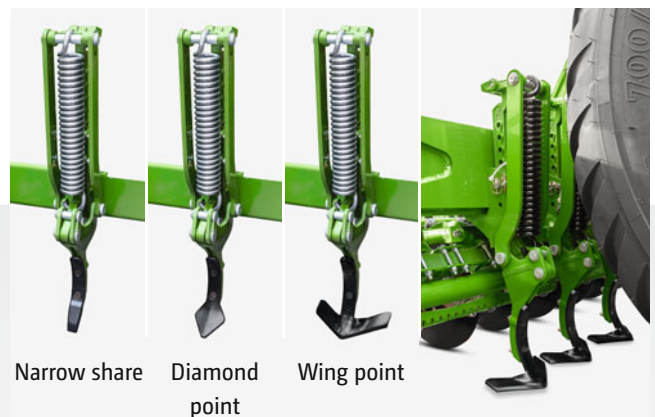
## Tractor wheel mark eradicators

For the operation on light or unconsolidated soils, and as an option, tractor wheel mark eradicators are available. The wheel marks are loosened and levelled. The hydraulic actuation automatically lifts and lowers the eradicators on the headland or folds them up for transport.



## Seed drill wheel mark eradicators

The task of the seed drill wheel mark eradicators is to loosen the compacted tracks behind the seed drill tyres. The seed drill wheel mark eradicators can be adjusted both horizontally and vertically. The special kinematics of the eradicators provides a constant spring force over the entire area of deflection. The choice of points includes a narrow point, a diamond point and a wing point.





## Air pre-heater – for blockage-free work in wet weather

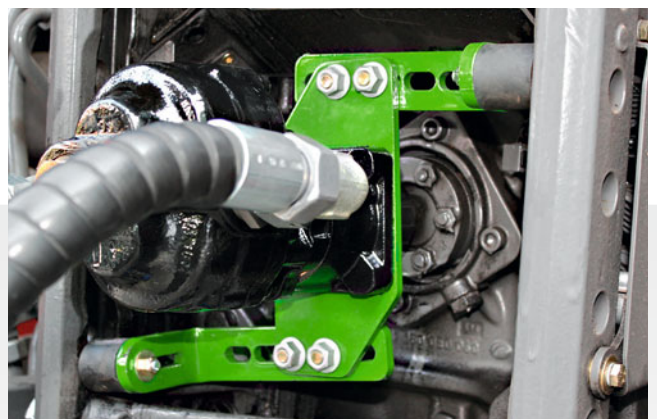
The high-capacity oil cooler prevents any overheating of the oil circuit. At the same time the blower fan of the seed drill sucks in air for the seed transfer system through the fins on the cooler. The heated air effectively prevents the sticking of seed and fertiliser at high application rates and in wet weather.

## Seed pipe monitoring – everything under control

Another useful system to assist the driver is the optionally available seed pipe monitoring which detects immediately any blockages down at the coulter and in the seed tube. Mounted directly behind the distributor head, sensors monitor the seed flow in the seed pipes. The system automatically detects when the drill is tramlining.

## On-board hydraulic system – ready for every eventuality

To be able to ensure the required oil flow for the hydraulic blower fan, especially when used behind tractors with poor hydraulic capacity, AMAZONE offers an on-board hydraulic system with an oil tank on the seed drill and a separate hydraulic pump as optional equipment. It can be quickly and easily attached to the PTO shaft of the tractor.



# Everything thought of!

The right solution for any requirement



✔ Tight turning with the Citan on the headland

## Guide wheel harrow

The guide wheel harrows crumble the soil after the guide wheels have passed over it, ensuring ideal sowing, even in the areas which have been driven over.





## Road lighting kit

The Citan road transport lighting meets all road traffic requirements for transport safety.

## LED work lights

The Citan is also available with high-performance LED work lights.

### The options:

- ✔ Self-contained 2-piece LED work lights with their own power supply and switch
- ✔ Integrated 4-piece LED work lights, controllable via the ISOBUS machine actuation

## Improved load distribution – second guide wheel

AMAZONE offers a second guide wheel as standard for the Citan 15001-C and as an option for the 12001-C for better weight distribution on deeply loosened soils and soils with a low carrying capacity. Thanks to the improved load distribution, deeper wheel marks and at the same time harmful compaction are effectively prevented. In addition, a smoother and more precise run of the coulters in the row is achieved, so that the depth maintenance and the placement accuracy are increased.

## Filling auger – quick and safe filling

A filling auger is also available as an option for the Citan trailed seed drill. The filling auger allows quick and easy filling directly from a transfer trailer vehicle.

- ✔ Second guide wheel set on the Citan 12001-C



# There is no method more efficient!

So end users make a judgement on the Citan 12001-C

## ! “We achieve such a high sowing outputs”

“100 to 120 ha per shift, more than 2,500 ha per season – is no problem with our new Citan 12001-C”, reports W. M. Nadeew. W. M. Nadeew is the Deputy General Director of the “Schazk Zolotaja Niva” farm, which is part of the Agroterra Group. Here a semi-continental climate prevails and the average rainfall amounts to 450 to 500 mm per year. Last year the farm grew 10,162 ha of winter wheat, 8,169 ha of sunflowers and 7,945 ha of spring rape. “Compared with other seed drills, the Citan provides us with a series of benefits,” explains the Deputy General Director. “We achieve high sowing work rates. In addition, we require fewer filling systems to supply the seed and fertiliser.” W. N. Makarov, the chief agronomist of “Schazk Zolotaja Niva”, says that another benefit of the Citan is the easy initial adjustment of the seed rate and the sowing depth. And: “Irrespective of the soil type, the actual seed rates and sowing depths match very well to what we have pre-set. In this way we can finish sowing punctually by the optimum dates yet with a high quality of finish. This ensures our yields and makes the Citan stand out in comparison with other seed drills.”



Head agronomist” W. N. Makarov (right), Deputy General Director W. M. Nadeew (left), Russia

## ! “Top performance at the optimum sowing date”

“In 2011 we purchased the first five Citan 12000”, Tschernikow Alexander, chief agronomist of the farm “Tula Wozroschdenije” reports. “We then had such a good experience with these machines that we decided in 2012 to purchase twelve more Citan 12001-C.”

The ground consists of medium to heavy loamy, leached black soil. The average rainfall is 550 to 600 mm/year. The farm cultivated over 42,000 ha of arable land in 2012. “At sowing speeds of 10 to 12 km/ha, we manage with each Citan approximately 160 ha of cereals/day or 200 ha of rape/day. So in spring and autumn 2012 we sowed more than 3,000 ha with each machine.” states Tschernikow Alexander. “With this quality of machinery we manage top-work rates at the optimum sowing date. When cereal sowing, one tank fill is sufficient for over 2 to 2.5 hours before we have to refill. At the same time, the RoTeC pro coulters reliably sow the seed at the desired depth. The distribution along the rows is also optimal. This provides us with a good and even field emergence.”



From left to right: Farmer from the Tula region, chief agronomist Alexander Tschernikow and Aleksey Baryschewskij, director of the distributor company “Agrolider”

# Technical data:

## Citan trailed seed drill



Model	Citan 12001-C	Citan 15001-C
Working width (m)	12.00	15.00
Transport width (m)	3.00	
Transport height (m)	3.95	3.95
Transport length (m)	9.00	10.50
Operational speed (km/h)	8–16	
Average work rates (ha/h)	10–12	10–15
Power requirement (kW/hp)	from 170/231	from 210/286
Hopper capacity (l)	7,800	7,800
Division of the 3-chamber pressurised tank	2,400/2,400/3,000	2,400/2,400/3,000
Linkage	Cat. 3, Cat. 4 or Cat. K700 lower link	
Coulter system	RoTeC pro coulter	
Number of rows	72	90
Row spacing (cm)	12.5/16.6	16.6
Weight (kg)	from 9,500	from 10,500
Operator terminal	AmaLog <sup>+</sup> , ISOBUS	

Illustrations, content and technical data are not binding and may differ depending on the level of equipment. Country-specific road traffic regulations apply and must be complied with, meaning that special approval may be required. The permissible axle loads and total weights of the tractor should be checked. Not all the listed combination options are possible with all tractor manufacturers.

**Superbly compact folding technology – all Citan models offer a transport width of just 3 m and a minimal transport height.**



Citan 12001-C



# AMAZONE



Illustrations, content and technical data are not binding and may differ depending on the level of equipment. Country-specific road traffic regulations apply and must be complied with, meaning that special approval may be required. The permissible axle loads and total weights of the tractor should be checked. Not all the listed combination options are possible with all tractor manufacturers.



**AMAZONEN-WERKE H. DREYER SE & Co. KG**

P. O. Box 51 · 49202 Hasbergen-Gaste/Germany

Phone +49 (0)5405 501-0 · Fax +49 (0)5405 501-193